



**A Genome-Wide Association Study of Type 2
Diabetes in Finns Detects Multiple Susceptibility
Variants**

Laura J. Scott, *et al.*
Science **316**, 1341 (2007);
DOI: 10.1126/science.1142382

***The following resources related to this article are available online at
www.sciencemag.org (this information is current as of March 19, 2008):***

Updated information and services, including high-resolution figures, can be found in the online version of this article at:

<http://www.sciencemag.org/cgi/content/full/316/5829/1341>

Supporting Online Material can be found at:

<http://www.sciencemag.org/cgi/content/full/1142382/DC1>

This article **cites 28 articles**, 16 of which can be accessed for free:

<http://www.sciencemag.org/cgi/content/full/316/5829/1341#otherarticles>

This article has been **cited by** 57 article(s) on the ISI Web of Science.

This article has been **cited by** 50 articles hosted by HighWire Press; see:

<http://www.sciencemag.org/cgi/content/full/316/5829/1341#otherarticles>

This article appears in the following **subject collections**:

Genetics

<http://www.sciencemag.org/cgi/collection/genetics>

Information about obtaining **reprints** of this article or about obtaining **permission to reproduce this article** in whole or in part can be found at:

<http://www.sciencemag.org/about/permissions.dtl>

G. Brice,⁶ B. Bullman,⁷ J. Campbell,⁸ B. Castle,⁹ R. Cetnarsyji,⁸ C. Chapman,¹⁰ C. Chu,¹¹ N. Coates,¹² T. Cole,¹⁰ R. Davidson,⁴ A. Donaldson,¹³ H. Dorkins,³ F. Douglas,² D. Eccles,⁹ R. Eeles,¹ F. Elmslie,⁶ D. G. Evans,⁷ S. Goff,⁶ S. Goodman,⁵ D. Goudie,² J. Gray,¹⁵ L. Greenhalgh,¹⁶ H. Gregory,¹⁷ S. V. Hodgson,⁶ T. Homfray,⁶ R. S. Houlston,¹ L. Izatt,¹⁸ L. Jackson,¹⁸ L. Jeffers,¹⁹ V. Johnson-Roffey,¹² F. Kavalier,¹⁸ C. Kirk,¹⁹ F. Lalloo,⁷ C. Langman,¹⁸ I. Locke,¹ M. Longmuir,⁴ J. Mackay,²⁰ A. Magee,¹⁹ S. Mansour,⁶ Z. Miedzybrodzka,¹⁷ J. Miller,¹¹ P. Morrison,¹⁹ V. Murday,⁴ J. Paterson,²¹ G. Pichert,¹⁸ M. Porteous,⁸ N. Rahman,⁶ M. Rogers,¹⁵ S. Rowe,²² S. Shanley,¹ A. Saggart,⁶ G. Scott,² L. Side,²³ L. Snadden,⁴ M. Steel,² M. Thomas,⁵ S. Thomas,¹

¹Clinical Genetics Service, Royal Marsden Hospital, Downs Road, Sutton, Surrey, SM2 5PT, UK. ²Department of Clinical Genetics, Ninewells Hospital, Dundee, DD1 9SY, UK. ³Medical and Community Genetics, Kennedy-Galton Centre, Level 8V, Northwick Park and St. Mark's NHS Trust, Watford Rd, Harrow, HA1 3UJ, UK. ⁴Institute of Medical Genetics, Yorkhill NHS Trust, Dalnair Street, Glasgow, G3 8SJ, UK. ⁵Clinical Genetics Department, Royal Devon and Exeter Hospital (Heavitree), Gladstone Road, Exeter, EX1 2ED, UK. ⁶Department of Clinical Genetics, St. George's

Hospital Medical School, Jenner Wing, Cranmer Terrace, London, SW17 0RE, UK. ⁷Department of Medical Genetics, St. Mary's Hospital, Hathersage Road, Manchester, M13 0JH, UK. ⁸South East of Scotland Clinical Genetics Service, Western General Hospital, Crewe Road, Edinburgh, EH4 2XU, UK. ⁹Department of Medical Genetics, The Princess Anne Hospital, Coxford Road, Southampton, SO16 5YA, UK. ¹⁰Clinical Genetics Unit, Birmingham Women's Hospital, Metchley Park Road, Edgbaston, Birmingham, B15 2TG, UK. ¹¹Yorkshire Regional Genetic Service, Department of Clinical Genetics, Cancer Genetics Building, St. James University Hospital, Beckett Street, Leeds, LS9 7TF, UK. ¹²Department of Clinical Genetics, Leicester Royal Infirmary, Leicester, LE1 5WW, UK. ¹³Department of Clinical Genetics, St Michael's Hospital, Southwell Street, Bristol, BS2 8EG, UK. ¹⁴Institute of Human Genetics, International Centre for Life, Central Parkway, Newcastle upon Tyne, NE1 3BZ, UK. ¹⁵Institute of Medical Genetics, University Hospital of Wales, Heath Park, Cardiff, CF14 4XW, UK. ¹⁶Department of Clinical Genetics, Alder Hey Children's Hospital, Eaton Road, Liverpool L12 2AP, UK. ¹⁷Clinical Genetics Centre, Argyll House, Foresterhill, Aberdeen, AB25 2ZR, UK. ¹⁸Clinical Genetics, 7th Floor New Guy's

House, Guy's Hospital, St. Thomas Street, London, SE1 9RT, UK. ¹⁹Clinical Genetics Service, Belfast City Hospital Trust, Belvoir Park Hospital, Lisburn Road, Belfast, BT9 7AB, UK. ²⁰Clinical and Medical Genetics Unit, Institute of Child Health, 30 Guildford Street, London, WC1N 1EH, UK. ²¹Department of Clinical Genetics, Addenbrooke's NHS Trust, Box 134, Hills Road, Cambridge, CB2 2QQ, UK. ²²Department of Clinical Genetics, Moston Lodge, Countess of Chester Hospital, Liverpool Road, Chester, CH2 1UL, UK. ²³Department of Clinical Genetics, Churchill Hospital, Old Road, Headington, Oxford OX3 7LJ, UK.

Supporting Online Material

www.sciencemag.org/cgi/content/full/1142364/DC1
Materials and Methods
Figs. S1 to S8
Tables S1 to S10
References

9 March 2007; accepted 20 April 2007

Published online 26 April 2007;

10.1126/science.1142364

Include this information when citing this paper.

A Genome-Wide Association Study of Type 2 Diabetes in Finns Detects Multiple Susceptibility Variants

Laura J. Scott,¹ Karen L. Mohlke,² Lori L. Bonnycastle,³ Cristen J. Willer,¹ Yun Li,¹ William L. Duren,¹ Michael R. Erdos,³ Heather M. Stringham,¹ Peter S. Chines,³ Anne U. Jackson,¹ Ludmila Prokunina-Olsson,³ Chia-Jen Ding,¹ Amy J. Swift,³ Narisu Narisu,³ Tianle Hu,¹ Randall Pruim,⁴ Rui Xiao,¹ Xiao-Yi Li,¹ Karen N. Conneely,¹ Nancy L. Riebow,³ Andrew G. Sprau,³ Maurine Tong,³ Peggy P. White,¹ Kurt N. Hetrick,⁵ Michael W. Barnhart,⁵ Craig W. Bark,⁵ Janet L. Goldstein,⁵ Lee Watkins,⁵ Fang Xiang,¹ Jouko Saramies,⁶ Thomas A. Buchanan,⁷ Richard M. Watanabe,^{8,9} Timo T. Valle,¹⁰ Leena Kinnunen,^{10,11} Gonçalo R. Abecasis,¹ Elizabeth W. Pugh,⁵ Kimberly F. Doheny,⁵ Richard N. Bergman,⁹ Jaakko Tuomilehto,^{10,11,12} Francis S. Collins,^{3*} Michael Boehnke^{1*}

Identifying the genetic variants that increase the risk of type 2 diabetes (T2D) in humans has been a formidable challenge. Adopting a genome-wide association strategy, we genotyped 1161 Finnish T2D cases and 1174 Finnish normal glucose-tolerant (NGT) controls with >315,000 single-nucleotide polymorphisms (SNPs) and imputed genotypes for an additional >2 million autosomal SNPs. We carried out association analysis with these SNPs to identify genetic variants that predispose to T2D, compared our T2D association results with the results of two similar studies, and genotyped 80 SNPs in an additional 1215 Finnish T2D cases and 1258 Finnish NGT controls. We identify T2D-associated variants in an intergenic region of chromosome 11p12, contribute to the identification of T2D-associated variants near the genes *IGF2BP2* and *CDKAL1* and the region of *CDKN2A* and *CDKN2B*, and confirm that variants near *TCF7L2*, *SLC30A8*, *HHEX*, *FTO*, *PPARG*, and *KCNJ11* are associated with T2D risk. This brings the number of T2D loci now confidently identified to at least 10.

Type 2 diabetes (T2D) is a disease characterized by insulin resistance and impaired pancreatic beta-cell function that affects >170 million people worldwide (1). With first-degree relatives having ~3.5 times as much risk as compared to individuals in the general middle-aged population (2), hereditary factors, together with lifestyle and behavioral factors, play an important role in determining T2D risk (3). To date, intense efforts to identify genetic risk factors in T2D have met with only limited success. This study, reports from our collaborators (4–6), and the recently published work of Sladek *et al.* (7) describe results of genome-wide association

(GWA) studies that further define the genetic architecture of T2D and identify biological pathways involved in T2D pathogenesis.

We genotyped 1161 Finnish T2D cases and 1174 Finnish NGT controls on 317,503 SNPs on the Illumina HumanHap300 BeadChip in stage 1 of a two-stage GWA study of T2D (8). These samples are from the Finland–United States Investigation of Non–Insulin–Dependent Diabetes Mellitus Genetics (FUSION) (9, 10) and Finrisk 2002 (11) studies (tables S1 and S2A). Among the 317,503 GWA SNPs, 315,635 had ≥ 10 copies of the less common allele [minor allele frequency (MAF) > 0.002] and passed quality-control crite-

ria (8). We tested these 315,635 SNPs for association with T2D using a model that is additive on the log-odds scale (Table 1 and tables S3 and S4) (8). We observed a modest excess (41 observed versus 31.6 expected; $P = 0.19$) of SNPs with P values < 10^{-4} (fig. S1). These results argue against the existence of multiple common SNPs with a large impact on T2D disease risk but are consistent with the presence of multiple common SNPs that each confer modest risk. The results also suggest that the matching of cases and controls by birth province, sex, and age (8) has been successful; in support of this conclusion, the genomic control (I_2) correction value is 1.026.

Analysis of our Illumina HumanHap300 data allowed us to query much of the known SNP variation in the genome. To increase this proportion, we developed an imputation method (8, 13) that uses genotype data and linkage disequilibrium (LD) information from the HapMap Centre d'Etude du Polymorphisme Humain (Utah residents with ancestry from northern and

¹Department of Biostatistics and Center for Statistical Genetics, University of Michigan, Ann Arbor, MI 48109, USA. ²Department of Genetics, University of North Carolina, Chapel Hill, NC 27599, USA. ³Genome Technology Branch, National Human Genome Research Institute, Bethesda, MD 20892, USA. ⁴Department of Mathematics and Statistics, Calvin College, Grand Rapids, MI 49546, USA. ⁵Center for Inherited Disease Research (CIDR), Institute of Genetic Medicine, Johns Hopkins School of Medicine, Baltimore, MD 21224, USA. ⁶Savitaipale Health Center, 54800 Savitaipale, Finland. ⁷Division of Endocrinology, Keck School of Medicine, University of Southern California, Los Angeles, CA 90033, USA. ⁸Department of Preventive Medicine, Keck School of Medicine, University of Southern California, Los Angeles, CA 90089, USA. ⁹Department of Physiology and Biophysics, Keck School of Medicine, University of Southern California, Los Angeles, CA 90033, USA. ¹⁰Diabetes Unit, Department of Epidemiology and Health Promotion, National Public Health Institute, 00300 Helsinki, Finland. ¹¹Department of Public Health, University of Helsinki, 00014 Helsinki, Finland. ¹²South Ostrobothnia Central Hospital, 60220 Seinäjoki, Finland.

*To whom correspondence should be addressed. E-mail: boehnke@umich.edu (M.B.); francisc@mail.nih.gov (F.S.C.)

Table 1. Confirmed T2D susceptibility loci based on all available data from the FUSION, DGI, and WTCCC/UKT2D samples.

FUSION	Chr	Position (bp)	Genes	Risk allele / nonrisk allele	FUSION Stage 1 + 2 control risk allele freq.	FUSION stage 1		FUSION stage 2		FUSION stage 1 + 2		DGI All Data		WTCCC/UKT2D All Data		FUSION-DGI-WTCCC/UKT2D All Data		Total sample size for 80% power**		
						OR	P	OR	P	OR	P	OR	P	OR	P	OR	P		OR	P
						(95% CI)		(95% CI)		(95% CI)		(95% CI)		(95% CI)		(95% CI)			(95% CI)	
New T2D Loci																				
rs4402960	3	186,994,389	<i>IGF2BP2</i>	T/G	0.30	1.28 (1.13–1.45)	1.2×10 ⁻⁴	1.08 (0.96–1.22)	0.22	1.18 (1.08–1.28)	2.1×10 ⁻⁴	1.17 (1.11–1.23)	1.7×10 ⁻⁹	1.11 (1.05–1.16)	1.6×10 ⁻⁴	1.14 (1.11–1.18)	8.9×10 ⁻¹⁶	~4300		
rs7754840*	6	20,769,229	<i>CDKAL1</i>	C/G	0.36	1.16 (1.02–1.30)	0.021	1.08 (0.96–1.22)	0.20	1.12 (1.03–1.22)	0.0095	1.08 (1.03–1.14)	2.4×10 ⁻³	1.16 (1.10–1.22)	1.3×10 ⁻⁸	1.12 (1.08–1.16)	4.1×10 ⁻¹¹	~5300		
rs10811661	9	22,124,094	<i>CDKN2A/B</i>	T/C	0.85	1.17 (0.98–1.39)	0.082	1.22 (1.04–1.44)	0.015	1.20 (1.07–1.36)	0.0022	1.20 (1.12–1.28)	5.4×10 ⁻⁸	1.19 (1.11–1.28)	4.9×10 ⁻⁷	1.20 (1.14–1.25)	7.8×10 ⁻¹⁵	~3900		
rs9300039†	11	41,871,942		C/A	0.89	1.52 (1.24–1.87)	6.0×10 ⁻⁵	1.45 (1.19–1.77)	2.7×10 ⁻⁴	1.48 (1.28–1.71)	5.7×10 ⁻⁸	1.16 [¶] (0.95–1.42)	0.12	1.13 [#] (0.99–1.29)	0.068	1.25 (1.15–1.37)	4.3×10 ⁻⁷	~3400		
rs8050136	16	52,373,776	<i>FTO</i>	A/C	0.38	1.03 (0.92–1.16)	0.58	1.18 (1.05–1.33)	0.0063	1.11 (1.02–1.20)	0.016	1.03 [¶] (0.91–1.17)	0.25	1.23 (1.18–1.32)	7.3×10 ⁻¹⁴	1.17 (1.12–1.22)	1.3×10 ⁻¹²	~2700		
Previously published T2D association																				
rs1801282	3	12,368,125	<i>PPARG</i>	C/G	0.82	1.30 (1.11–1.53)	0.0011	1.08 (0.93–1.26)	0.33	1.20 (1.07–1.33)	0.0014	1.09 (1.01–1.16)	0.019	1.23 [#] (1.09–1.41)	0.0013	1.14 (1.08–1.20)	1.7×10 ⁻⁶	~6400		
rs13266634	8	118,253,964	<i>SLC30A8</i>	C/T	0.61	1.22 (1.08–1.38)	0.0010	1.14 (1.02–1.28)	0.026	1.18 (1.09–1.29)	7.0×10 ⁻⁵	1.07 (1.0–1.16)	0.047	1.12 (1.05–1.18)	7.0×10 ⁻⁵	1.12 (1.07–1.16)	5.3×10 ⁻⁸	~5100		
rs1111875‡	10	94,452,862	<i>HHEX</i>	C/T	0.52	1.13 (1.01–1.27)	0.039	1.06 (0.94–1.19)	0.34	1.10 (1.01–1.19)	0.026	1.14 (1.06–1.22)	1.7×10 ⁻⁴	1.13 (1.07–1.19)	4.6×10 ⁻⁶	1.13 (1.09–1.17)	5.7×10 ⁻¹⁰	~4200		
rs7903146§	10	114,748,339	<i>TCF7L2</i>	T/C	0.18	1.39 (1.20–1.61)	1.2×10 ⁻⁵	1.30 (1.12–1.50)	3.5×10 ⁻⁴	1.34 (1.21–1.49)	1.3×10 ⁻⁸	1.38 (1.31–1.46)	2.3×10 ⁻³¹	1.37 [#] (1.25–1.49)	6.7×10 ⁻¹³	1.37 (1.31–1.43)	1.0×10 ⁻⁴⁸	~1000		
rs5219 ^{¶¶}	11	17,366,148	<i>KCNJ11</i>	T/C	0.46	1.20 (1.07–1.36)	0.0022	1.04 (0.92–1.16)	0.55	1.11 (1.02–1.21)	0.013	1.15 (1.09–1.21)	1.0×10 ⁻⁷	1.15 [#] (1.05–1.25)	0.0013	1.14 (1.10–1.19)	6.7×10 ⁻¹¹	~3700		
Total sample size						2,335		2,473		4,808		13,781		13,965		32,544				
Number of cases/controls						1,161/1,174		1,215/1,258		2,376/2,432		6,529/7,252		5,681/8,284		14,586/17,968				

*rs10946398 WTCCC/UKT2D ($r^2 = 1$). †Multimarker tag for rs9300039 DGI and rs1514823 WTCCC/UKT2D ($r^2 = 0.965$). ‡rs5015480 WTCCC GWA only ($r^2 = 1$). §rs7901695 WTCCC/UKT2D ($r^2 = 0.849$). ¶rs5215 WTCCC/UKT2D ($r^2 = 0.995$). ¶¶DGI GWA samples. #WTCCC GWA samples. **Approximate total sample size for 80% power to detect T2D SNP association at significance level 0.05 is based on the FUSION control risk allele frequency and the risk ratio calculated from FUSION-DGI-WTCCC/UKT2D all-data analyses, assuming 0.10 T2D prevalence. The sample sizes vary slightly from those of (4) because study-specific allele frequencies were used in the calculations.

western Europe) (CEU) samples to predict genotypes of autosomal SNPs not genotyped in our subjects. A total of 2.09 million HapMap CEU SNPs (14) had imputed MAF >1% in FUSION and passed our imputation quality-control criteria. In the HapMap CEU sample, imputed SNPs passing these criteria increased coverage of SNPs with MAF >1% from 71.9 to 89.1% at an r^2 threshold of 0.8.

To increase the statistical power to detect T2D predisposing variants, we compared our stage 1 results to GWA results from the Diabetes Genetics Initiative (DGI) and the Wellcome Trust Case Control Consortium (WTCCC). We selected 82 SNPs for FUSION stage 2 follow-up genotyping based on evidence from: (i) FUSION-genotyped and FUSION-imputed SNPs; (ii) a combined analysis of GWA results from FUSION, DGI, and WTCCC; and (iii) previous T2D association results. For (i) and (ii), we used a prioritization algorithm that advantaged SNPs based on genome annotation (8) (table S7) and gave preference to genotyped SNPs over nearby imputed SNPs. We successfully genotyped 80 of the 82 SNPs in our stage 2 sample of 1215 Finnish T2D cases and 1258

Finnish NGT controls (8) (table S2B) and carried out joint analysis of the combined FUSION stage 1 + 2 sample (table S5). DGI (4) and United Kingdom T2D Genetics Consortium (UKT2D) (5) investigators also followed up DGI and WTCCC GWAs by genotyping replication samples.

We confirmed well-established T2D associations with *TCF7L2*, *PPARG*, and *KCNJ11* (Table 1) (15–18). SNPs in *TCF7L2* reached genome-wide significance in the FUSION stage 1 + 2 sample [odds ratio (OR) = 1.34, $P = 1.3 \times 10^{-8}$] and in the FUSION-DGI-WTCCC/UKT2D “all-data” (i.e., all GWA and follow-up samples) meta-analysis (OR = 1.37, $P = 1.0 \times 10^{-48}$) (Table 1 and table S5). *PPARG* Pro¹²→Ala¹² (rs1801282) and *KCNJ11* Glu²³→Lys²³ (rs5219) were not genotyped in the FUSION GWA, but nearby SNPs showed some evidence for T2D association, as did the imputed genotypes for the coding variants. All-data meta-analysis resulted in genome-wide significant T2D association with *KCNJ11* Glu²³→Lys²³ (OR = 1.14, $P = 6.7 \times 10^{-11}$) and strong evidence for *PPARG* Pro¹²→Ala¹² (OR = 1.14, $P = 1.7 \times 10^{-6}$). The *PPARG* and *KCNJ11* results emphasize the value

of combining data across studies and suggest that other T2D-associated loci remain to be found.

The combined samples from the three studies provide evidence for seven additional T2D loci. For the first three of these loci, we had strong evidence in the FUSION stage 1 GWA data and, for the latter four, our FUSION stage 1 evidence was more modest.

A cluster of variants in the *IGF2BP2* (insulin-like growth factor 2 mRNA binding protein 2) region was associated with T2D in our stage 1 sample (e.g., rs1470579 with OR = 1.27, $P = 1.6 \times 10^{-4}$) (Fig. 1A). The all-data meta-analysis for rs4402960 resulted in genome-wide significance (OR = 1.14, $P = 8.9 \times 10^{-16}$). Including the rs4402960 genotype as a covariate essentially eliminates evidence for T2D association for other variants in the cluster (Fig. 1A), which is consistent with all SNPs representing the same T2D-predisposing variant(s). *IGF2BP2* is a paralog of *IGF2BP1*, which binds to the 5' untranslated region of the insulin-like growth factor 2 (*IGF2*) mRNA and regulates *IGF2* translation (19). *IGF2* is a member of the insulin family of polypeptide growth factors involved in the development, growth, and stimulation of

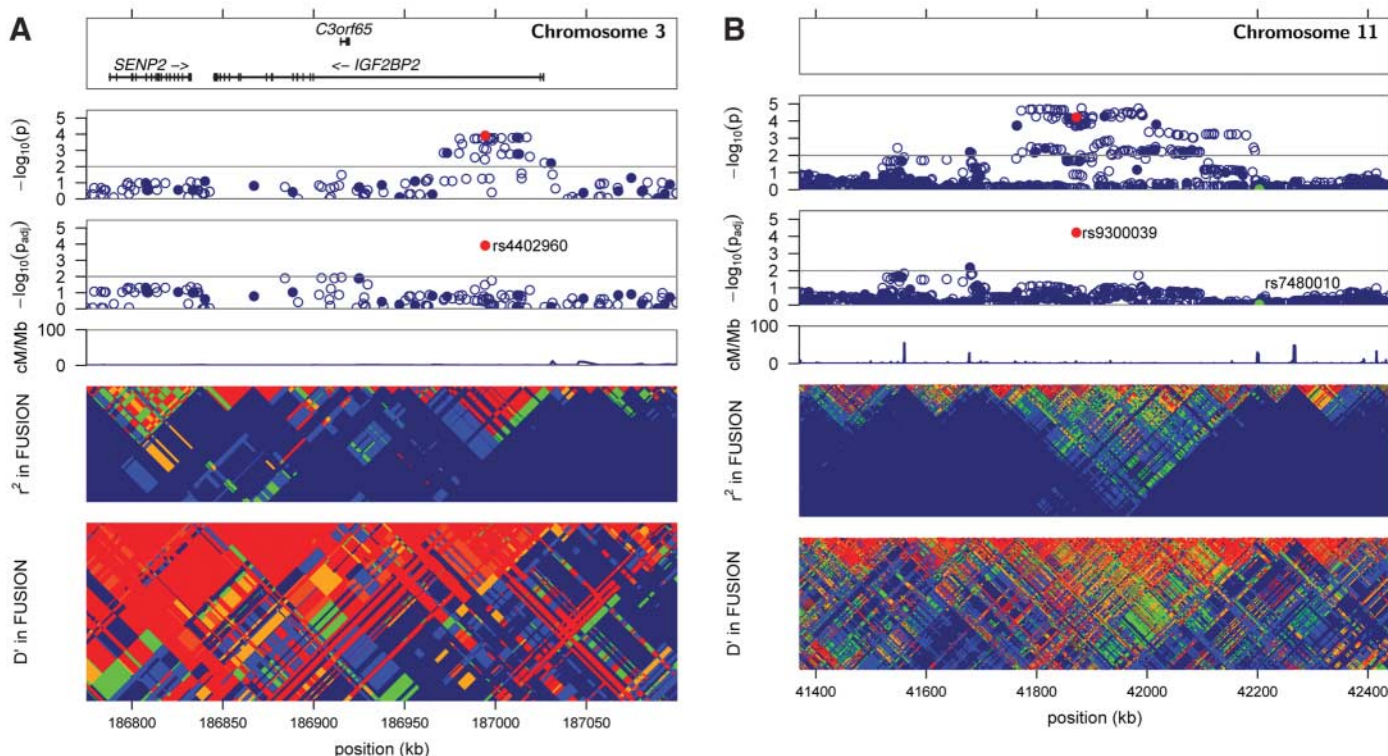


Fig. 1. Plots of T2D association and LD in FUSION stage 1 samples for regions surrounding *IGF2BP2* (A) and rs9300039 (B). (A) and (B) each contain six panels. The top panels display RefSeq genes; there are none in the rs9300039 region. The second panels (i.e., directly below the top panels) show the T2D association $-\log_{10} P$ values in FUSION stage 1 samples for SNPs genotyped in the GWA panel (closed blue circles) or imputed (open blue circles). The third panels show T2D association $-\log_{10} P$ values for each SNP in a logistic regression model correcting for the reference SNP [indicated by the red circle for rs4402960 in (A) and for rs9300039 in (B)]. SNP rs7480010,

reported by Sladek *et al.* (7), is also labeled in the rs9300039 plot (B) (green circle). A decrease in the $-\log_{10} P$ value from the second to the third panels indicates that the association signal of the tested SNPs can be explained, at least in part, by the reference SNP. In both regions, the reference SNP was chosen for convenience; the choice of another strongly associated SNP nearby would have resulted in a similar picture. The fourth panels show recombination rate in centimorgans per megabase for the HapMap CEU sample (14). The fifth and sixth panels show LD r^2 and D' based on FUSION stage 1–genotyped and FUSION stage 1–imputed data.

insulin action. The most strongly associated *IGF2BP2* SNPs are located in a 50-kb region within intron 2 (Fig. 1A); diabetes-predisposing variants may therefore affect regulation of *IGF2BP2* expression.

SNP rs13266634, a nonsynonymous Arg³²⁵→Trp³²⁵ variant in the pancreatic beta-cell-specific zinc transporter *SLC30A8* (20), showed (through our annotation-based algorithm) evidence for T2D association in stage 1 (Table 1 and fig. S2). Modest evidence in stage 2 resulted in stronger evidence in our stage 1 + 2 sample (OR = 1.18, $P = 7.0 \times 10^{-5}$) (Table 1 and table S5). Subsequent DGI and UKT2D genotyping resulted in strong evidence in the combined samples (OR = 1.12, $P = 5.3 \times 10^{-8}$). Sladek *et al.* (7) recently reported independent T2D association evidence with the same allele in two French samples ($P = 1.8 \times 10^{-5}$ and $P = 5.0 \times 10^{-7}$). *SLC30A8* transports zinc from the cytoplasm into insulin secretory vesicles (20, 21), where insulin is stored as a hexamer bound with two Zn²⁺ ions before secretion (22). Variation in *SLC30A8* may affect zinc accumulation in insulin granules, affecting insulin stability, storage, or secretion. In high-glucose conditions, overexpression of *SLC30A8* in insulinoma (INS-1E)

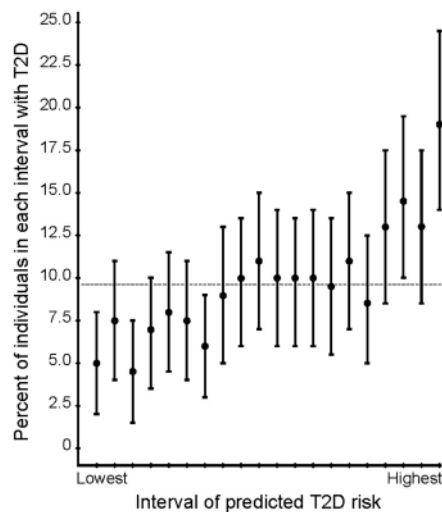


Fig. 2. Prediction of T2D risk in the FUSION sample with the use of 10 T2D susceptibility variants. T2D cases and NGT controls with complete genotype data were included in the analysis. To obtain a sample with a T2D prevalence of ~10%, we included nine copies of each of 2176 NGT controls and one copy of each of 2102 T2D cases. The predicted risk for each individual was estimated from a logistic regression model containing the 10 risk variants listed in Table 1. The proportion of T2D cases is shown for 20 equal intervals of predicted T2D risk. We constructed 95% confidence intervals (CIs) for the proportion of T2D cases in each interval using the original sample of 2102 cases and 2176 controls. The constructed sample T2D prevalence (0.096) is shown as a horizontal line. The proportion of T2D cases increases from ~5% in the lowest to 20% in the highest predicted risk categories.

cells enhanced glucose-induced insulin secretion (21).

SNP rs9300039 in an intergenic region on chromosome 11 showed evidence for T2D association in stage 1 (Table 1 and Fig. 1B); genotyping our stage 2 sample resulted in near genome-wide significance in our stage 1 + 2 sample (OR = 1.48, $P = 5.7 \times 10^{-8}$) (Table 1 and tables S3 and S5). In the WTCCC and DGI scans, the nearby SNP rs1514823 ($r^2 = 0.97$ with rs9300039) provided weak evidence for T2D association with the appropriate allele; combining results across all three studies gave OR = 1.25 and $P = 4.3 \times 10^{-7}$. Fifty-six imputed SNPs and two more genotyped SNPs spanning 219 kb are in LD with rs9300039 and show substantial evidence for T2D association ($P < 10^{-4}$) in our stage 1 sample (table S3 and Fig. 1B). Including the genotype for rs9300039 as a covariate essentially eliminates evidence for T2D association with the remaining SNPs (Fig. 1B). This region includes three sets of spliced Expressed Sequence Tags but no annotated genes. The identification of a T2D-associated variant >1 Mb from the nearest annotated gene highlights the value of a genome-wide approach. Sladek *et al.* (7) reported strongly associated SNPs in two nearby regions on chromosome 11. SNP rs7480010 near hypothetical gene *LOC387761* is 331 kb centromeric to rs9300039. LD between rs9300039 and rs7480010 is essentially zero ($r^2 = 0.00063$ and $D' = 0.036$), and rs7480010 showed little evidence for association in our stage 1 + 2 sample (OR = 1.03, $P = 0.54$). Sladek *et al.* (7) also reported T2D association with three intronic variants of *EXT2*, located ~2.4 Mb centromeric of rs9300039; we found no evidence for association with *EXT2* SNPs.

SNP rs4712523, located within intron 5 of *CDKAL1*, showed modest evidence for T2D association in our FUSION stage 1 sample, which strengthened slightly in our combined stage 1 + 2 sample (OR = 1.12, $P = 0.0073$) (table S5). Nearby SNPs in strong LD with rs4712523 including rs7754840 showed modest evidence for T2D association in the DGI scan and considerably stronger evidence in the WTCCC scan. Including strong DGI and UKT2D replication data resulted in genome-wide significance (OR = 1.12, $P = 4.1 \times 10^{-11}$ for rs7754840) in the all-data meta-analysis (Table 1). *CDKAL1* [cyclin-dependent kinase 5 (CDK5) regulatory subunit associated protein-1-like 1] shares protein domain similarity with CDK5 regulatory subunit-associated protein 1 (CDK5RAP1), which specifically inhibits activation of CDK5 by CDK5 regulatory subunit 1 (CDK5R1) (23). Using quantitative reverse transcription polymerase chain reaction analysis of a panel of RNA samples from human tissues and cells, we detected the highest expression of *CDKAL1* in skeletal muscle and brain cells, as well as in 293T and HepG2 cells (fig. S3A). The associated SNPs within intron 5, or SNPs in LD with them, may regulate expression of *CDKAL1* and so affect the

expression of CDK5. CDK5 and CDK5R1 activity is influenced by glucose and may influence beta-cell processes (24, 25); overactivity of CDK5 in the pancreas may lead to beta-cell degeneration, especially under glucotoxic conditions (26).

SNP rs10811661 near cyclin-dependent kinase inhibitors *CDKN2A* and *CDKN2B* showed modest evidence for T2D association in our stage 1 + 2 sample (OR = 1.20, $P = 0.0022$) (Table 1 and table S5) and showed genome-wide significance in the all-data meta-analysis (OR = 1.20, $P = 7.8 \times 10^{-15}$). SNP rs10811661 is located upstream of *CDKN2A* and *CDKN2B*, may have a long-range effect on one of these genes, or may influence a gene not yet annotated. *CDKN2A* and *CDKN2B* inhibit the activity of CDK4 and CDK6. In mice, *Cdk4* activity has been shown to influence beta-cell proliferation and mass, with loss of *Cdk4* leading to diabetes (27, 28). We find *CDKN2A* to be expressed at high levels in islets, adipocytes, brain, and pancreas and at even higher levels in 293T, HeLa, and HepG2 cells (fig. S3B); *CDKN2B* is expressed in islets and adipocytes and, to a lesser degree, in small intestine, colon, 293T, and HepG2 cells (fig. S3C). *CDKN2A* and *CDKN2B* are also tumor suppressor genes and may play a role in aging (29).

SNPs rs1111875 and rs7923837 showed modest evidence of T2D association in the FUSION and DGI scans, much stronger evidence in the WTCCC scan, and genome-wide significant evidence (OR = 1.13, $P = 5.7 \times 10^{-10}$ for rs1111875) in the all-data meta-analysis. These SNPs are in LD ($r^2 = 0.70$) in a region that includes *HHEX* (hematopoietically expressed homeobox), which is critical for development of the ventral pancreas (30), the insulin-degrading enzyme gene *IDE*, and the kinesin-interacting factor 11 gene *KIF11*. Sladek *et al.* (7) recently reported independent genome-wide significant evidence for T2D association with these SNPs.

The WTCCC/UKT2D groups identified evidence for T2D and body mass index (BMI) associations with a set of SNPs including rs8050136 in the *FTO* region; the T2D association appears to be mediated through a primary effect on adiposity (5, 6, 31). We observed modest evidence for association with T2D in the combined FUSION stage 1 + 2 sample (OR = 1.11, $P = 0.016$) (Table 1 and table S5).

T2D can be a component of a larger syndrome of metabolic abnormalities, and we were interested to assess the effects of T2D-related traits on our association results. We repeated our T2D association analysis for the 10 SNPs in Table 1 with one of several variables included as an additional covariate. Adjustment for BMI strengthened T2D association with *TCF7L2* and *SLC30A8*, weakened association with rs9300039 and *FTO*, and had little effect on the other loci. The effect of waist circumference was similar to that of BMI; blood pressure variables had essentially no effect.

We previously carried out T2D linkage analysis in the families of many of our stage 1 cases (10). None of the 10 loci in Table 1 had large T2D logarithm of the odds (LOD) scores, although those for *FTO* and *TCF7L2* were 0.63 and 0.60 and so were nominally significant. LOD scores for six of the 10 loci were greater than 0.2, as compared to 2.2 that would be expected for random genome locations. This suggests enrichment for T2D-associated loci in regions with modest evidence of T2D linkage ($P = 0.01$) but that the power of the linkage approach was insufficient to distinguish these signals from background noise.

The ability to construct a list of ten robust and replicated T2D-associated loci (Table 1) represents a landmark in efforts to identify genetic variants that predispose to complex human diseases, although the specific predisposing variants and even the relevant genes remain to be defined. We examined the combined risk of T2D based on these 10 loci in our stage 1 + 2 sample by constructing a logistic regression model and predicting T2D risk for each person (8). We found a fourfold variation in T2D risk from the lowest to highest predicted risk groups, which is of potential interest for a personalized preventive-medicine program (Fig. 2). However, these predictions from our data may be biased as compared to predictions based on the general population, likely owing to the overestimation of ORs due to the “winner’s curse,” enrichment for familial T2D cases, and exclusion of individuals with impaired glucose tolerance or impaired fasting glucose.

Thirty years ago, James V. Neel labeled T2D as “the geneticist’s nightmare” (32), predicting that the discovery of genetic factors in T2D would be thoroughly challenging. Until recently, his prediction has proven true. Although large samples and collaboration among three groups were required, we can confidently state that new diabetes risk factors have been identified. Each gene discovery points to a pathway that contributes to pathogenesis, and all of these proteins and their relevant pathways represent potential drug targets for the prevention or treatment of diabetes. Based on the number of other interesting results observed in these studies, it is likely that there are additional T2D-predisposing loci to be found. Even though much remains to be done, we are at last awakening from Jim Neel’s nightmare.

References and Notes

1. S. Wild, G. Roglic, A. Green, R. Sicree, H. King, *Diabetes Care* **27**, 1047 (2004).
2. S. S. Rich, *Diabetes* **39**, 1315 (1990).
3. J. Kaprio *et al.*, *Diabetologia* **35**, 1060 (1992).
4. Diabetes Genetics Initiative, *Science* **316**, 1331 (2007); published online 26 April 2007 (10.1126/science.1142358).
5. E. Zeggini *et al.*, *Science* **316**, 1336 (2007); published online 26 April 2007 (10.1126/science.1142364).
6. The Wellcome Trust Case Control Consortium, *Nature*, in press.
7. R. Sladek *et al.*, *Nature* **445**, 881 (2007).
8. Materials and methods are available as supporting material on Science Online.
9. T. Valle *et al.*, *Diabetes Care* **21**, 949 (1998).
10. K. Silander *et al.*, *Diabetes* **53**, 821 (2004).

11. T. Saaristo *et al.*, *Diabetes Vasc. Dis. Res.* **2**, 67 (2005).
12. B. Devlin, K. Roeder, *Biometrics* **55**, 997 (1999).
13. Y. Li, P. Scheet, J. Ding, G. R. Abecasis, submitted for publication; manuscript available from G.R.A. (e-mail: goncalo@umich.edu).
14. International HapMap Consortium, *Nature* **437**, 1299 (2005).
15. S. F. Grant *et al.*, *Nat. Genet.* **38**, 320 (2006).
16. S. S. Deeb *et al.*, *Nat. Genet.* **20**, 284 (1998).
17. D. Alshuler *et al.*, *Nat. Genet.* **26**, 76 (2000).
18. A. L. Gloyn *et al.*, *Diabetes* **52**, 568 (2003).
19. J. Nielsen *et al.*, *Mol. Cell. Biol.* **19**, 1262 (1999).
20. F. Chimienti, S. Devergnas, A. Favier, M. Seve, *Diabetes* **53**, 2330 (2004).
21. F. Chimienti *et al.*, *J. Cell Sci.* **119**, 4199 (2006).
22. M. F. Dunn, *Biomaterials* **18**, 295 (2005).
23. Y. P. Ching, A. S. Pang, W. H. Lam, R. Z. Qi, J. H. Wang, *J. Biol. Chem.* **277**, 15237 (2002).
24. M. Ubeda, D. M. Kemp, J. F. Habener, *Endocrinology* **145**, 3023 (2004).
25. F. Y. Wei *et al.*, *Nat. Med.* **11**, 1104 (2005).
26. M. Ubeda, J. M. Rukstalis, J. F. Habener, *J. Biol. Chem.* **281**, 28858 (2006).
27. S. G. Rane *et al.*, *Nat. Genet.* **22**, 44 (1999).
28. T. Tsutsui *et al.*, *Mol. Cell. Biol.* **19**, 7011 (1999).
29. W. Y. Kim, N. E. Sharpless, *Cell* **127**, 265 (2006).
30. R. Bort, J. P. Martinez-Barbera, R. S. Bedington, K. S. Zaret, *Development* **131**, 797 (2004).
31. T. M. Fraying *et al.*, *Science* **316**, 889 (2007); published online 12 April 2007 (10.1126/science.1141634).
32. J. V. Neel, in *The Genetics of Diabetes Mellitus*, W. Creutzfeldt, J. Köbberling, J. V. Neel, Eds. (Springer, Berlin, 1976), pp. 1–11.
33. We thank the Finnish citizens who generously participated in this study; our colleagues from the DGI, WTCCC, and UKT2D for sharing prepublication data from their studies; S. Enloe of FUSION and E. Kwasnik, J. Gearhart, J. Romm, M. Zilka, C. Ongaco, A. Robinson, R. King, B. Craig, and E. Hsu of CIDR for expert technical work; and D. Leja of NHGRI for expert assistance with a figure. Support for this research was provided by NIH grants DK062370 (M.B.), DK072193 (K.L.M.), HL084729 (G.R.A.), HG002651 (G.R.A.), and US4 DA021519; National Human Genome Research Institute intramural project number 1 Z01 HG000024 (F.S.C.); a postdoctoral fellowship award from the American Diabetes Association (C.J.W.); a Wenner-Gren Fellowship (L.P.O.); and a Calvin Research Fellowship (R.P.). Genome-wide genotyping was performed by the Johns Hopkins University Genetic Resources Core Facility (GRCF) SNP Center at CIDR with support from CIDR NIH (contract N01-HG-65403) and the GRCF SNP Center.

Supporting Online Material

www.sciencemag.org/cgi/content/full/1142382/DC1

Author Contributions
Materials and Methods
Figs. S1 to S3
Tables S1 to S7
References

12 March 2007; accepted 20 April 2007

Published online 26 April 2007;

10.1126/science.1142382

Include this information when citing this paper.

Complex I Binding by a Virally Encoded RNA Regulates Mitochondria-Induced Cell Death

Matthew B. Reeves,^{1*} Andrew A. Davies,¹ Brian P. McSharry,² Gavin W. Wilkinson,² John H. Sinclair^{1†}

Human cytomegalovirus infection perturbs multiple cellular processes that could promote the release of proapoptotic stimuli. Consequently, it encodes mechanisms to prevent cell death during infection. Using rotenone, a potent inhibitor of the mitochondrial enzyme complex I (reduced nicotinamide adenine dinucleotide–ubiquinone oxidoreductase), we found that human cytomegalovirus infection protected cells from rotenone-induced apoptosis, a protection mediated by a 2.7-kilobase virally encoded RNA (β 2.7). During infection, β 2.7 RNA interacted with complex I and prevented the relocalization of the essential subunit genes associated with retinoid/interferon-induced mortality–19, in response to apoptotic stimuli. This interaction, which is important for stabilizing the mitochondrial membrane potential, resulted in continued adenosine triphosphate production, which is critical for the successful completion of the virus’ life cycle. Complex I targeting by a viral RNA represents a refined strategy to modulate the metabolic viability of the infected host cell.

During primary infection or reactivation of human cytomegalovirus (HCMV), especially in the immunocompromised, the virus is able to replicate in a number of cell types, often resulting in life-threatening disease (1). HCMV exhibits a relatively protracted life cycle (upwards of 5 days) and at early times of infection (12 to 24 hours) encodes a highly abundant 2.7-kb RNA transcript (β 2.7), accounting for >20% of total viral gene transcription (2, 3) of unknown function. The RNA may be associated with mitochondria (4), and no protein product of this RNA has ever been detected in

infected cells (3), suggesting that it functions as a noncoding RNA (5).

We investigated the possibility that β 2.7 could function as a noncoding RNA. A

¹Department of Medicine, University of Cambridge, Addenbrooke’s Hospital, Hills Road, Cambridge, CB2 2QQ, UK. ²Section for Infection and Immunity, College of Medicine, University of Wales, Heath Park, Cardiff, CF14 4XX, UK.

*Present address: Novartis Institutes for Biomedical Research, 500 Technology Square, Cambridge, MA 02139, USA.

†To whom correspondence should be addressed. E-mail: js@mole.bio.cam.ac.uk